



LaunchPad

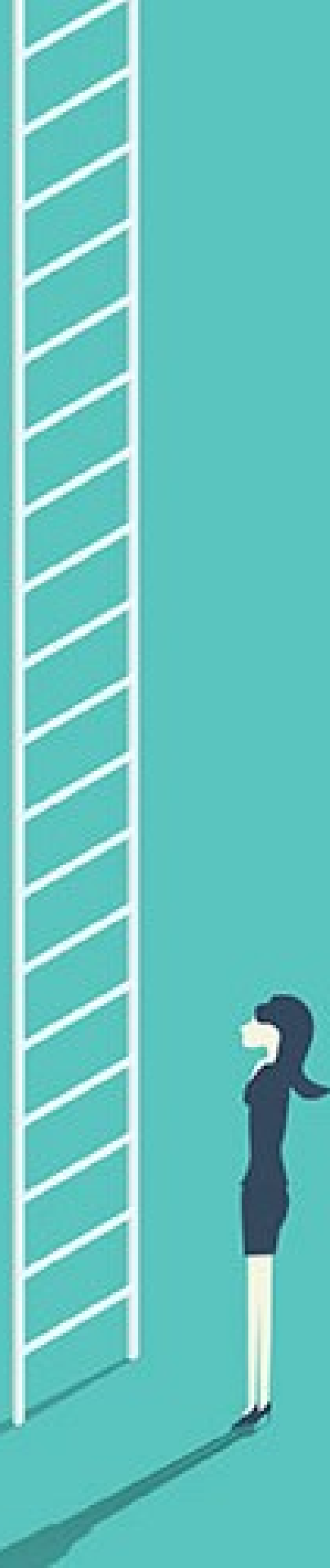
A Women in Leadership Program

Designed for...

organizations that are unafraid of trailblazing.

A development intervention by women, for women; LaunchPad is a feminist perspective on Corporate Leadership that speaks directly to its audience.

From defining success, to bridging the gaps, to shattering the glass-ceiling, this program is customizable for women at all rungs of the corporate ladder



Participants will...

take this light-hearted, yet intense journey of self-discovery with Road to Utopia and each other.

The program will focus primarily on questioning existing models, taking forward what is relevant and changing what doesn't work in progress-oriented workplaces.

- Self, peculiarity and Everyday leadership
- Cracking communication
- Politics of ego and altruism
- Change and conflict negotiation
- Applying the art of creating and fostering
- Navigating through conditioning and guilt
- Place your company in the future of profitably-humanitarian corporate culture



Features

Classroom sessions, powerful group learning environments and safe spaces.



- Intense kinesthetic, mental and emotional routine
- Projects, research and assignments
- Case studies and brainstorming
- Social experiments
- Guest speakers of relevance
- Coaching and mentorship programs



A young, queer-feminist collective. With the unwavering goal of promoting and facilitating equality, we work with corporates, NGOs, communities and individuals to bring about diversity and inclusion in smart, impactful and creative ways.